

**YÖRÜK**  
METALURJİ SANAYİ ve TİC. A.Ş.



[www.yorukmetalurji.com](http://www.yorukmetalurji.com) • [www.yorukmetalurji.com](http://www.yorukmetalurji.com) • [www.yorukmetalurji.com](http://www.yorukmetalurji.com)



## HAKKIMIZDA

ŞUBAT 2018 YILINDA, ANKARA SINCAN ORGANİZE SANAYİ BÖLGESİNDE KURULAN FIRMAMIZ, DENEYİMLİ GENÇ VE DİNAMİK KADROSUYLA MÜŞTERİLERİNE MÜHENDİSLİK ÇÖZÜMLER SUNMAYI, ÜRETİM ÖNCESİ VE SONRASI TÜM GÜCÜYLE MÜŞTERİLERİNİN MEMNUNİYETİNİ GÖZETEN HİZMET ANLAYIŞIYLA SEKTÖRÜNDE ÖNCÜ OLMAYI, YARATICI VE YENİLİKÇİ DÜŞÜNCE TARZIYLA DEMİR ÇELİK SEKTÖRÜNE KALİTELİ HİZMET ETMEYİ İLKE EDİNMIŞTİR.

500 TON/AY KAPASİTEYLE PLANLANMIŞ OLAN VE 7000 M<sup>2</sup> Sİ KAPALI OLMAK ÜZERE TOPLAM 10000 M<sup>2</sup> 'YE SAHİP FABRİKAMIZDA, 50KG'DAN 11000 KG'A KADAR UZANAN TEK PARÇA ÜRETİMİ REÇİNELİ KALIPLAMA SİSTEMİ, OTOMATİK MİKSERLER VE İNDÜKSİYON OCAKLARIYLA GERÇEKLEŞTİRİLMEKTEDİR. KAZANDIĞINI ÜRETİME AKTARMAYI VE İSTİHDAM SAĞLAMAYI İLKE EDİNEN FIRMAMIZ İLERİYE DÖNÜK YATIRIMLARINA HIZLA DEVAM ETMEKTİR. SİZ DEĞERLİ MÜŞTERİLERİMİZE HİZMET GENÇ FIRMAMIZIN KIVANÇ VE ONUR KAYNAĞIDIR.

## ABOUT US

YORUK METALLURGY HAS BEEN ESTABLISHED IN FEBRUARY 2018 IN ANKARA FOR THE PURPOSE OF SERVING PLEASURE TO OUR CUSTOMERS WITH WELL EXPERIENCED STAFF, THOSE OF WHOM FLOWN UP WITH NEW IDEAS AND INNOVATIVE THINKING STYLES IN IRON-STEEL SECTOR. OUR FOUNDRY HAS 7000M<sup>2</sup> PRODUCTION AREA AND TOTALLY 10000M<sup>2</sup> AREA AND HAVE BEEN PLANNED AS 500 TONS/MONTH CAPACITY. THE PRODUCTION OF THE PARTS IN THE WEIGHT RANGE OF 50 KG TO 11000 KG IS ALL DONE BY PLC CONTROLLED INDUCTION FURNACES CONTINUOUS SAND MIXERS. DUE TO THE PRINCIPLE OF THE INJECTION OF THE EARNS DIRECTLY TO IMPROVEMENT OF PRODUCTION, YORUK METALLURGY CONTINUE TO MAKE INVESTMENTS AND INCREASE EMPLOYMENT CAPACITY. TO SERVE AND SATISFY OUR PRECIOUS CUSTOMERS IS GLADNESS AND PLEASURE TO OUR FIRM.

## **OCAKLARIMIZ**

### **OCAK TİPİ**

ERGİTME/BEKLETME ÜNİTELİ  
İNDÜKSİYON OCAĞI

### **ERGİTİM KAPASİTESİ**

3 ADET 4,5 TON KAPASİTELİ

### **ERGİTİM GÜCÜ**

2000 KW

### **BEKLETME GÜCÜ**

600 KW



## **FURNACES**

### **FURNACE TYPE**

MELT/HOLD TYPE  
INDUCTION FURNACES

### **MELT CAPACITY**

3 LADDLES EACH WITH 4,5 TONES

### **MELT POWER**

2000 KW

### **HOLD POWER**

600 KW



## **KALIPLAMA SİSTEMİMİZ**

### **MİKSER TİPİ**

PLC KONTROLLÜ SÜREKLİ  
KARIŞTIRICILI MİKSERLER

### **MİKSER KAPASİTESİ**

1 ADET 20 TON/SAAT  
1 ADET 10 TON/SAAT  
2 ADET 3 TON/SAAT

### **KUM YENİLEME ÜNİTESİ**

12 TON/SAAT

### **KUM SİSTEMİ**

ALPHA-SET REÇİNELİ KUM SİSTEMİ



## **MOULDING SYSTEM**

### **MIXER TYPE**

PLC CONTROLLED CONTINUOUS MIXERS

### **MIXER CAPACITY**

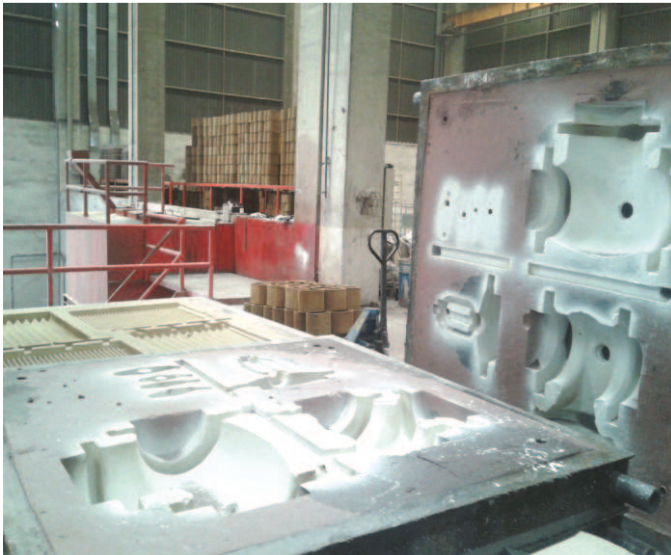
1x20 TONS/HR  
1x10 TONS/HR  
2x3 TONS/HR

### **RECLAMATION UNIT**

12 TONS/HR

### **SAND SYSTEM**

ALPHA-SET RESIN SAND SYSTEM



## **ISIL İŞLEM MERKEZİMİZ**

### **FIRIN TİPİ**

PLC SICAKLIK KONTROLLÜ ELEKTRİKLİ  
ENDÜSTRİYEL ISIL İŞLEM FIRINI

### **FIRIN KAPASİTESİ**

20 TON, 5 TON

### **ISIL İŞLEM SICAKLIK ARALIĞI**

300-1200 (C)

### **FIRIN NET ÖLÇÜLERİ(ARABA)**

L: 4000MM W: 3000MM H: 3000MM  
L: 2000MM W: 2000MM H: 2000MM

### **ISIL İŞLEM HAVUZU KAPASİTESİ**

L: 5000MM W: 5000MM H: 4000MM  
100 TON SU KAPASİTESİ

### **YAPILABİLEN ISIL İŞLEMLER**

NORMALIZE  
NORMALIZE+SUDA SOĞUTMA  
NORMALIZE+HAVADA SOĞUTMA  
TEMPERLEME

## **HEAT TREATMENT CENTER**

### **FURNACE TYPE**

PLC HEAT CONTROLLED ELECTRICAL HEAT  
TREATMENT FURNACE

### **FURNACE CAPACITY**

20 TONS, 5 TONS

### **TEMPERATURE RANGE**

300-1200 ( C )

### **FURNACE NET DIMENSIONS (CAR)**

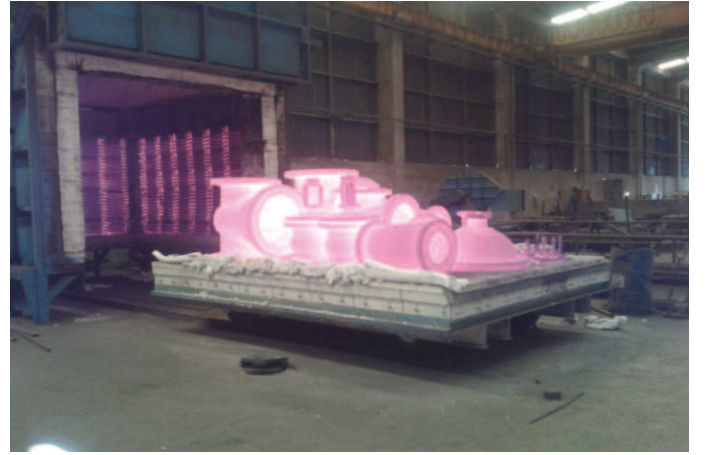
L: 4000MM W: 3000MM H: 3000MM  
L: 2000MM W: 2000MM H: 2000MM

### **POOL CAPACITY**

L: 5000MM W: 5000MM H: 4000MM  
100 TONS WATER CAPACITY

### **POSSIBLE HEAT TREATMENT**

NORMALISING  
WATER QUENCHING  
AIR QUENCHING  
TEMPERING



## KUMLAMA MERKEZİMİZ

### KUMLAMA KABİN ÖLÇÜLERİ

YÜKSEKLİK 3500MM  
DÖNÜŞ ÇAĞI 2200MM

### TRIBÜN ADEDİ

4 ADET

### VİNÇ KAPASİTESİ

10 TON



## SHOT BLASTING EQUIPMENT

### CABIN DIMENSIONS

HEIGHT 3500MM  
TURNING DIAMETER 2200MM

### TRIBUNE AMOUNT

4 PCS

### CRANE HANGING CAPACITY

10 TONS



## LABORATUVARIMIZ

### SPEKTROMETRE

SPECTRO-SPECTROMAXXM  
AZOT KANALLI 0.002%-0.4% HASSASİYET

### SERTLİK

HARTİP 3000 PORTATİF SERTLİK CİHAZI  
200-960 HLD 0.5% HASSASİYET

### METALOGRAFİ

XJL-17BT TERS METAL MİKROSKOPU  
5X-100X  
NUMUNE PARLATMA CİHAZI  
ÇİFT DİSK 200MM; 100-500 RPM

### ÇARPMA TESTİ

ALŞA 30KPM ÇENTİK DARBE TEST CİHAZI

### ÇEKME TESTİ

ALŞA 10 TON ÇEKME TEST CİHAZI

### NDT

PT,UT,MT EKİPMANLARI VE SERTİFİKALİ PERSONELLERİ



## LABORATORY

### SPECTROMETER

SPECTRO-SPECTROMAXXM  
NITROGEN CHAN. 0.002%-0.4% SENSITIVITY

### HARDNESS

HARTİP 3000 PORTABLE HARDNESS DEVICE  
200-960 HLD 0.5% SENSITIVITY

### METALLOGRAPHY

XJL-17BT INVERTED METAL MICROSCOPE  
5X-100X  
SAMPLE POLISHING MACHINE  
DOUBLE DISC 200MM; 100-500 RPM

### CHARPY TEST

ALŞA 30KPM CHARPY TEST MACHINE

### TENSILE TEST

ALŞA 10 TONS TENSILE TEST MACHINE

### NDT

PT,UT,MT DEVICE & EQUIPMENT AND CERTIFICATED PERSONS



**ÜRÜNLERİMİZ / PRODUCTS**

**KARBON ÇELİKLERİ**

**CARBON STEELS**

**DÜŞÜK VE YÜKSEK ALAŞIMLI ÇELİKLER**

**LOW AND HIGH ALLOYED STEELS**

**MANGANLI ÇELİKLER**

**MANGANESE STEELS**

**TAKIM ÇELİKLERİ**

**TOOL STEELS**

**KROMLU BEYAZ DÖKME DEMİRLER**

**CHROMIUM WHITE CAST IRONS**

**PASLANMAZ ÇELİKLER**

**STAINLESS STEELS**

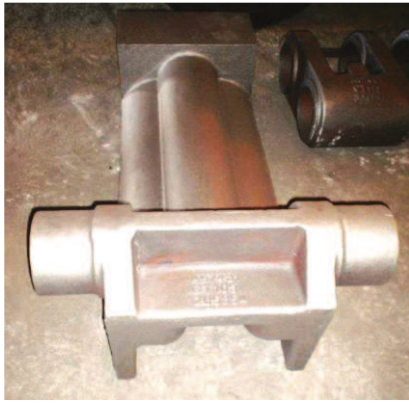
**CR-Nİ ÇELİKLERİ**

**CR-NI STEELS**

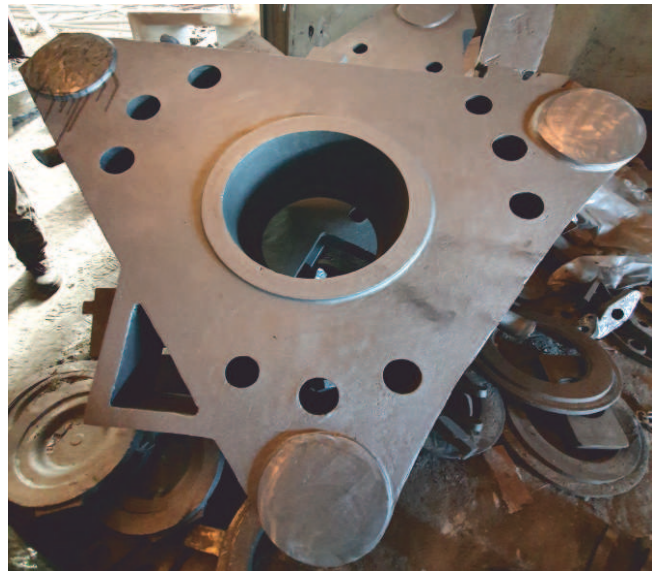
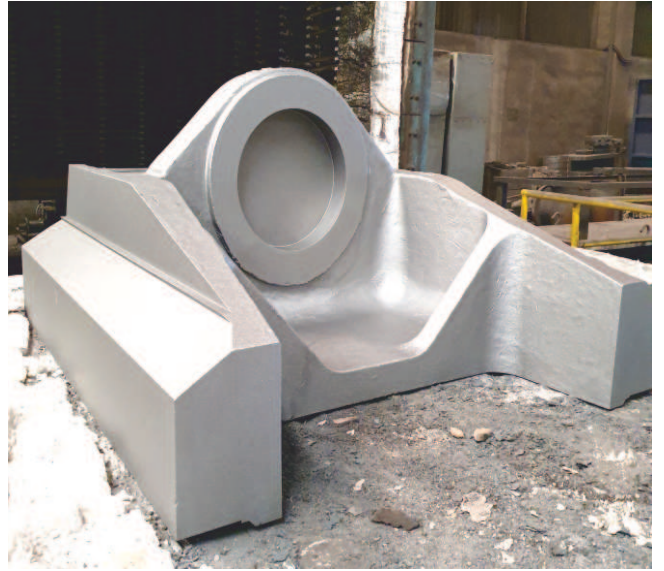












## SERTİFİKALARIMIZ / CERTIFICATES



www.yorukmetalurji.com • www.yorukmetalurji.com • www.yorukmetalurji.com • www.yorukmetalurji.com

**YMI**



# YÖRÜK

METALURJİ SANAYİ ve TİC. A.Ş.  
Ahievran OSB Mh. Oğuz Cd. No:29 Sincan / ANKARA  
Tel: +90 312 267 45 75 +90 312 267 56 82-83-84  
Fax: +90 312 267 57 02  
www.yorukmetalurji.com